



Luxury. Style. Sophistication.

Perfectly divide space with a landscape of large, vibrant Town & Country signature flames.

The WS54 See Thru features a choice of flame-bed styles: tranquil stone on sand, sparkling diamond tumbled glass, or a sophisticated beach-inspired look with driftwood logs*. With this fireplace, interior lighting adds dynamic injections of up-light through the sparkling Diamond burner or a subtle downlight cast over the Tranquility burner's stone and sand.

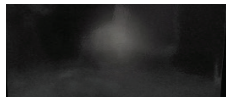
*Long Beach Driftwood logs are an upgrade option for the Diamond Burner only.

PRODUCT FEATURES

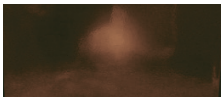
- Clean Face wide screen format
- Huge ceramic disappearing glass
- Create your perfect fire inside the firebox with Design-A-Fire
- Integrated Micro-Mesh Safety Screen
- Overhead LED Interior Lighting
- Up-lighting available with Diamond Burner Option
- Integrated Micro-Mesh Safety Screen
- Natural gas or propane
- Power Vented
- Versatile Installation up to 110 feet from an exterior wall with power venting
- Superior materials and construction
- Full integration with Smart Home Control Systems
- Total square inches of viewing area: 740
- BTU Input NG/LP: 61,000 high, 41,500/49,000 low
- Efficiency 30.7% (Based on CPSCA P.4.1-15)

Please note: Due to elevation and fuel type, flame characteristics may not be exactly as shown.

FIREBOX PANEL OPTIONS



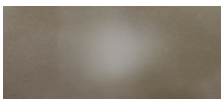
BLACK PORCELAIN



COFFEE BEAN BROWN PORCELAIN

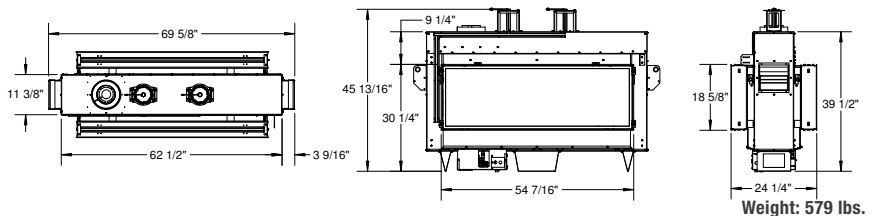


COPPER PORCELAIN



TITANIUM PORCELAIN

DIMENSIONS (SERIES D)



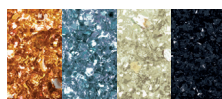
BURNER OPTIONS



LONG BEACH LOGSET



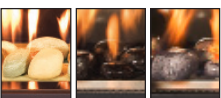
BLACK DIAMOND BURNER



TUMBLLED GLASS IN 4 COLORS



TRANQUILITY BURNER



RIVER ROCK IN 3 FINISHES